

# Marker Beacon S35-3000-14



## Description

This flush-mounted marker beacon antenna operates at 75 MHz. The antenna is fabricated from a one piece drawn aluminum can and is foam filled with an epoxy glass radome.

The **S35-3000-14** antenna is DC grounded to protect from lightning for a long service life. The two side-mounted BNC connectors eliminates the need for a splitter in double marker beacon installations. The antenna is interchangeable with the Comant CI-165.

## Federal & Military Certifications:

DO-143, DO-160G and MIL-STD-810D.

## Specifications

### Electrical

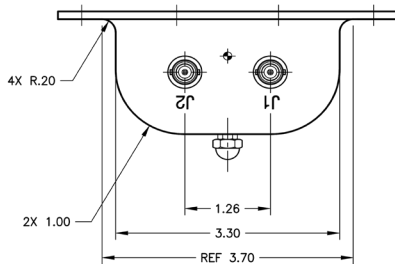
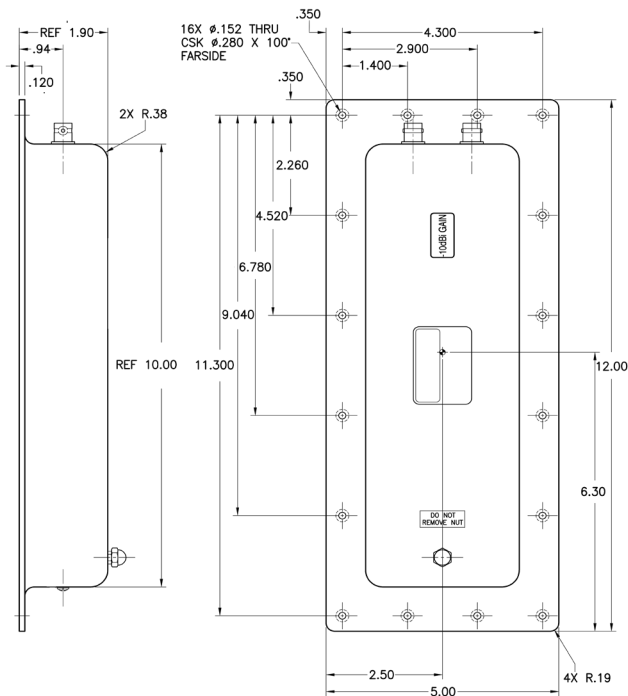
Frequency	75.0 MHz
VSWR	≤1.5:1 @ 75MHZ ≤5.0:1 @ 75 ±0.15 MHz
Polarization	Horizontal
Pattern	Single Downward Lobe
Impedance	50 Ω

### Mechanical

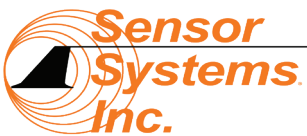
Weight	1.1 lbs.
Length	12.00 in.
Width	5.00 in.
Depth	1.90 in.
Material	Aluminum Alloy Cavity / Fiberglass Radome
Finish	Skydrol Resistant Polyurethane Enamel
Connector	BNC Female (2)

### Environmental

Temperature (Operating)	-55°C (-67°F) to +85°C (+185°F)
Altitude	50,000 ft.



Please Note: For REFERENCE ONLY  
Contact Sensor Systems for latest drawing



A HEICO COMPANY

Website: [www.sensorantennas.com](http://www.sensorantennas.com)

Phone: 818-341-5366